



HDZ 系列热室压铸机
HDZ Hot Chamber Die Casting Machine

HDZ30 – HDZ400



宁波保税区海天智胜金属成型设备有限公司
Ningbo Free Trade Zone Haitian Zhisheng Die Casting Equipment Co., Ltd.

地址: 浙江省宁波市北仑区大碶街道灵山路8-1号
ADD: No.8-1 Lingshan Road, Daqi, Beilun, Ningbo, Zhejiang
邮编 Zipcode: 315806
电话 Tel: +86-574-86185710
传真 Fax: +86-574-86185710
E-Mail: haitiandc@mail.haitian.com



HT 20260413-CV



MILESTONES 发展历程



张静章董事长创建海天
Zhang Jingzhang
founded Haitian



注册“海天”商标 1985
"Haitian" Trademark
was registered



海天智胜金属正式成立
Haitian Die Casting was officially
established



海天智胜金属荣获“国家高新技术企业”
认证
Haitian Die Casting wins the "National
High-tech Enterprise" certification



海天智胜金属通过ISO9001 质量管理体系认
证Haitian Die Casting passes ISO9001

海天智胜金属 HDC4500T 压铸机及压
铸岛成功交付并投入使用
Largest HDC Series so far with 4,500 tons
was successfully delivered



海天智胜金属交付首台 HDC8800T 压铸机
Delivery of the so far largest HDC machine
with 8,800 tons



海天智胜金属全球应用中心 2.0
-8800T 试模单元投入使用
Global mold test and application center
with an HDC 8800 die-casting cell established

压铸机在全球市场推出，
并为欧洲、美洲和亚洲的多个国家
提供销售、应用和售后服务。
Global market launch of Die casting machines
and have provided sales, application, and
after-sales services to multiple countries in
Europe, the Americas, and Asia.



HMG7000u 镁合金注射成型机发布
Global market launch of HMG7000u
Thixomolding Magnesium Machine



ABOUT US 关于我们

宁波保税区海天智胜金属成型设备有限公司是海天集团旗下产业之一，秉承海天集团半个世纪以来的精密设备制造和管理理念，坚持技术创新、合作共赢，为客户提供性价比优越的高端压铸成套设备和全套解决方案。

Haitian Die Casting is one of six business units of the globally positioned Haitian Group, the world's leading supplier of injection molding machines, CNC lines and smart solutions for intelligent manufacturing. Building on traditional roots and a value system focused on sustainability, the Haitian Die Casting team can draw on profound experience in the design and manufacture of manufacturing equipment.

2021年，海天智胜金属位于宁波北仑的全新生产基地投入使用，该项目总投资 1.6 亿美元，占地面积 139 亩，专门用于生产压铸机和镁合金注射成型机，年产能可达4000台。此外，该基地还设有海天智胜金属全球应用中心，是一个集超大型压铸试模、人员培训等服务于一体的高端应用平台。

Haitian Die Casting has in-depth knowledge of modern die casting technology and has been successful in the market with its die casting machines for many years. To meet the rapidly growing market demand, a new plant with total investment of USD 160 Mio and 139 hectares of production area was commissioned in 2021 in Beilun Ningbo, China. The plant has a capacity of up to 4,000 machines per year. In addition, the company also offer the mold testing, application and trainings for ultra large die casting machines at its international application center.



HDZ at a glance

HDZ 概览

高性能 High Performance

- 最大空射速度 ≥ 6m/s
 - 先进高效的压射油路，比例流量控制，提高压铸产品的成品率
 - 射出力、锁模力大，压铸产品致密性好
 - 具备末端刹车功能，减少飞边
 - 半闭环压射系统，配置电调阀，可实现快速速度自动调节，并实现下一模次自动修正；同时显示压力、速度、位置曲线
-
- Maximum injection speed ≥ 6m/s
 - Advanced and efficient injection oil circuit with proportional flow control, improving the yield of die-cast products.
 - High injection force and clamping force ensure good product density.
 - Equipped with an end braking function to reduce flash.
 - Semi-closed loop injection system with an electric control valve, enabling automatic speed adjustment and next-shot correction; displays pressure, speed, and position curves.



全自动电脑数控
Auto computer controller



坚固耐用的热作件
Reliable hot-work spare part

高效 Efficiency

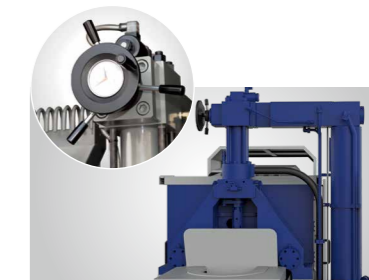
- 特快锁模功能，生产周期短、效率高
 - 独有的比例式液压系统，使开/锁模、顶针扣咀等动作的速度及压力都可以调整到最佳状态
 - 液压马达调模，操作简单，位置控制设定精度达 0.1mm
 - 头板、二板采用箱体或筋板式结构，刚度高而重量轻
-
- Ultra-fast clamping function reduces production cycle time and increases efficiency.
 - Unique proportional hydraulic system allows optimal adjustment of speed and pressure for clamping/unclamping and ejector pin operations.
 - Hydraulic motor mold adjustment with simple operation, position control accuracy reaching 0.1mm.
 - The headboard and platen use a box or ribbed structure for high rigidity and light weight.

智能、节能 Intelligence and Energy Saving

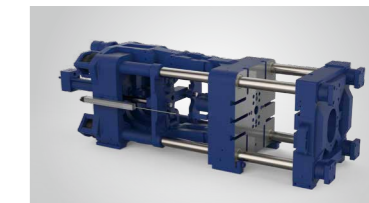
- 采用西门子控制系统，动态显示，故障时自动报警且显示故障位置，方便检查及维修
 - 专利无烟筒节能熔炉，省能 30% 以上
 - 伺服节能系统，压力响应更快，流量控制更精准，更加节能
-
- Siemens control system with dynamic display, automatic alarm, and fault location display for easy inspection and maintenance.
 - Patented chimney-less energy-saving melting furnace, saving over 30% energy.
 - Servo energy-saving system with faster pressure response, more precise flow control, and greater energy efficiency.

安全、耐用 Safety and Durability

- 可靠耐用的欧日名牌液压元件
 - 低压锁模保护功能，保护模板及模具
 - 安全门光幕开关，确保安全生产
-
- 自动中央润滑，机铰更强劲耐用
 - 独有的油温探测仪，确保平稳低油温状态，延长了油路元件的使用寿命
-
- Reliable and durable hydraulic components from European and Japanese brands.
 - Low-pressure clamping protection to safeguard templates and molds.
 - Safety door light curtain switch, ensuring safe production.
-
- Automatic central lubrication makes the toggle system more robust and durable.
 - Unique oil temperature detector ensures stable low oil temperature, extending the service life of hydraulic components.



强有力的射料系统
Strong injection design



坚固耐用的模板、强劲的机铰
Reliable mold platen ,strong hinge



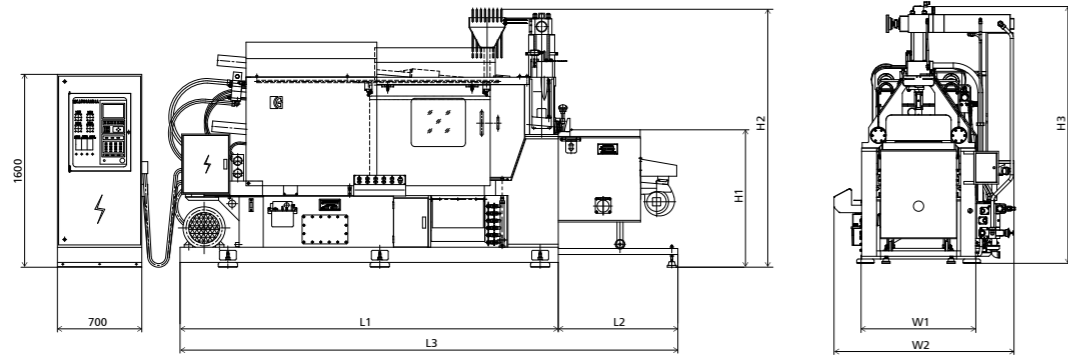
可靠耐用的欧日品牌液压元件
Reliable European and Japanese hydraulic valve

Technical parameter

技术参数

			HDZ30	HDZ50	HDZ88	HDZ130	HDZ168	HDZ200	HDZ280	HDZ400
锁模力	Clamping force	kN	300	500	880	1300	1680	2000	2800	4000
锁模行程	Clamping stroke	mm	180	220	270	280	380	395	505	450
顶出力	Ejection force	kN	34	55	55	73	73	114	114	205
顶出行程	Ejection stroke	mm	50	60	60	70	85	100	125	125
模具厚度 (最小 - 最大)	Mold thickness (Min-Max)	mm	80/300	80/320	127/350	160/450	200/500	250/550	200/640	300/750
模板尺寸 (水平 × 垂直)	Platen size (Horizontal x Vertical)	mm	410*424	455*473.5	530*530	595*625	685*687.5	740*740	840*840	980*1005
拉杆内间距 (水平 × 垂直)	Tie bar spacing (Horizontal x Vertical)	mm	275*275	310*310	360*360	410*410	450*450	510*510	560*560	620*620
拉杆直径	Tie bar diameter	mm	45	50	60	75	85	90	100	130
压射力	Injection force	kN	45	60	70	100	110	120	160	200
射料行程	Injection stroke	mm	120	130	130	140	160	165	180	230
锤头直径	Plunger tip diameter	mm	36/40	40/45	50/55	55/60	60/65	60/70	70/75	70/80/90
射料量 (锌)	Injection volume (Zinc)	kg	0.6/0.7	0.8/0.9	1.1/1.3	1.6/1.9	1.8/2.2	2.3/2.8	3.0/4.0	4.4/5.7/7.2
离咀行程	Traverse stroke	mm	160	190	210	210	210	240	190	340
坩埚容量	Crucible capacity	kg	250	300	350	350	350	500	500	1350
电炉容量	Electrical furnace capacity	kg	300	300	300	300	300/450	450	450	1300
铸造压力	Casting pressure	MPa	44.1/35.7	47.6/37.7	35.6/29.5	42.1/35.4	38.9/33.1	42.4/31.2	41.6/36.2	51.9/39.8/31.5
铸造面积	Casting area	cm ²	68/84	105/133	247/299	309/367	431/507	472/641	673/773	771/1005/1270
压射位置	Injection position	mm	0/-40	0/-50	0/-50	0/-65	0/-80	0/-100	0/-100	0/-125
系统工作压力	System working pressure	MPa	12.5	14.5	14.5	14.5	14.5	14.5	14.5	14.5
电机功率	Motor power	kW	7.5	7.5	11	15	18.5	15	22	22
电炉功率	Electrical furnace power	kW	21	21	24	24	24	27	36	60
油箱容量	Oil tank capacity	L	180	200	225	250	400	430	450	580
机器重量	Machine weight	T	2.5	3	4	5	6	7.8	10	16
机器外形尺寸 (长 × 宽 × 高)	Overall dimension (L × W × H)	mm	3305*1370*1700	3645*1410*1770	3808*1437*2055	4129*1460*2100	4515*1531*2214	5200*1690*2450	4915*1690*2145	7000*2200*2950

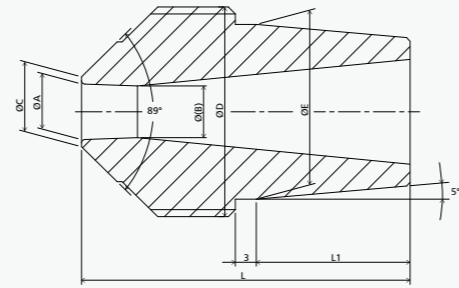
机身尺寸示意图 Machine Outline Dimensions



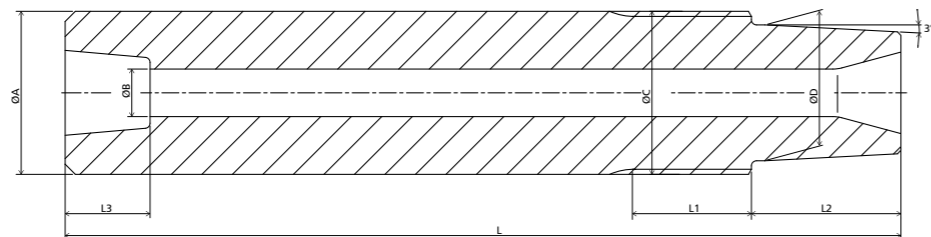
机型	L1	L2	L3	H1	H2	H3	W1	W2
HDZ30	2525	780	3305	905	1700	1700	804	1370
HDZ50	2735	910	3645	974	1990	1770	864	1410
HDZ88	2820	988	3808	955	1920	2055	930	1437
HDZ130	3137	992	4192	1033	1999	2100	950	1460
HDZ168	3550	965	4515	1102	2118	2214	1056	1531
HDZ200	3840	965	4805	1047	2369	2369	1050	1686
HDZ280	3950	965	4915	1095	2145	2060	1056	1531
HDZ400	5230	1000	6230	1230	2700	2950	1530	2200

射咀尺寸示意图 Nozzle Dimensions

L1	22										25
L1	47										55
øE	ø25										ø32
øD	M30×2										M39×2.5
øA	5	6	7	8	9	10	11	12	13	14	
ø(B)	4.4	5.4	6.4	7.4	8.4	9.4	10.4	11.4	12.65	13.65	
øC	7	8	9	10	11	12	13	14	15	16	
适用机型	HDZ30					HDZ130					
	HDZ50			HDZ88		HDZ168			HDZ200/HDZ280		



射咀身尺寸示意图 Nozzle Body Dimensions



机型	L	L1	L2	L3	øA	øB	øC	øD
HDZ30	250	25	44	25	ø42	ø12	M46*3	ø40
HDZ50	250	25	44	25	ø42	ø12	M46*3	ø40
HDZ88	270	35	44	25	ø48	ø14	M48*3	ø40
HDZ130	290	35	44	25	ø48	ø14	M48*3	ø40
HDZ168	310	35	44	25	ø48	ø16	M48*3	ø40
HDZ200	336	45	61	28	ø55	ø16	M55*3	ø47
HDZ280	382	35	60	28	ø58	ø18	M60*3	ø54

HDZ系列标准配置(主要) HDZ Series Standard Configuration (Main)

- 西门子控制电脑
 - 7寸彩色触控屏
 - 三相异步电机 + 比例压力流量阀
 - 慢速、快速压射速度手动调节
 - 智能调模方式
 - 特快锁模系统 (88T 以上)
 - 大规模水冷却器
 - 多处软管保护套
 - 电脑油温数显
 - 油位目视
 - 锁模位置非接触式磁栅尺控制
 - 顶针位置行程开关控制
 - 压射位置行程开关控制
 - 调模位置行程开关和调模电眼控制
 - 机铰独立润滑泵 + 容积式润滑分配器
 - 手动调模黄油润滑
 - 手动前后安全门
 - 码模夹一套
 - 整机共配备两套热作件 (包含鹅颈、发热套等)
- Siemens control computer
 - 7-inch color touch screen
 - Three-phase asynchronous motor + proportional pressure and flow valve
 - Manual adjustment of slow and fast injection speeds
 - Intelligent mold adjustment mode
 - Ultra-fast clamping system (for models above 88T)
 - Large size water cooler
 - Multiple hose protective sleeves
 - Digital display of oil temperature
 - Visual oil level
 - Non-contact magnetic scale control for clamping position
 - Ejector position controlled by limit switch
 - Injection position controlled by limit switch
 - Mold adjustment position controlled by limit switch and photoelectric sensor
 - Independent toggle lubrication pump + volumetric lubrication distributor
 - Manual mold adjustment with grease lubrication
 - Manual front and rear safety doors
 - One set of mold clamping clips
 - The entire machine is equipped with two sets of hot working components (including goosenecks, heating sleeves, etc.).

选配项

Optional Features

- 二快压射速度电动调节
 - 压力、速度、位置曲线显示
 - 伺服动力系统: 伺服电机 + 齿轮泵
 - 可选 1 组抽芯; 200T 以上可选 2 组
 - 抽芯快换接头
 - 安全门光幕开关
 - 油位下限报警
 - 顶针行程电子尺控制
 - 中子限位控制
 - 天然气炉 / 电磁炉 / 坩埚内置电阻丝炉 / 炉膛内置电阻丝炉
 - 自动喷雾装置 (适配于 200T 及以下机型)
 - 自动打头装置 (适配于 200T 及以下机型)
 - 吊模架 (适配于 280T 及以下机型)
- Electric adjustment for fast injection speed
 - Display of pressure, speed, and position curves
 - Servo power system: servo motor + gear pump
 - Optional one core-pulling set; two sets for models above 200T
 - Quick-change core-pulling couplings
 - Safety door light curtain switch
 - Low oil level alarm
 - Electronic ruler control for ejector stroke
 - Neutron limit control
 - Natural gas furnace / induction cooker / crucible with built-in resistance wire furnace / furnace bore with built-in resistance wire furnace
 - Automatic spraying device (suitable for models 200T and below)
 - Automatic heading device (suitable for models 200T and below)
 - Mold hanging rack (suitable for models 280T and below)